

- **Instructor:** Hurlee Gonchigdanzan
 - Office: D349 SCI
 - Email: hurlee@uwsp.edu
 - Phone: (715) 252 6635 (you may call or text)

!!! Always put your name and, course and section numbers when you contact me.

- **Office hours:** In my office or Zoom room <https://uwsp.zoom.us/j/2307492939>

If you can't make the office hours listed below, please text me or call me to make an appointment. We can meet either in my office or zoom room.

	Monday	Tuesday	Wednesday	Thursday	Friday
8:00 – 8:50	MATH.255	MATH.255	MATH.255	MATH.255	
9:00 – 9:50	OFFICE	OFFICE	OFFICE	OFFICE	
10:00 – 10:50	MATH.119	MATH.119	MEETING	MATH.119	MATH.119
11:00 – 11:50	OFFICE		OFFICE		
12:00 – 1:00	MATH.356		MATH.356		MATH.356
1:00 – 1:50	MATH.255	MATH.255	MATH.255	MATH.255	
2:00 – 2:50					

Text

Precalculus: Mathematics for Calculus, 7th Edition James Stewart, Lothar Redlin, Saleem Watson

There are many good examples with very detailed solutions in the textbook. It's highly recommended to read those examples.

Course Goal

Preparation for MATH 225 (Calculus I). Topics include concepts, trigonometric functions, their basic properties and graphs; inverse trigonometric functions; identities; applications Most sections of Chapters 5, 6, and 7. See the *Course Outline* for more details

Prerequisites

Math.107 or a suitable placement test

Calculator	<u>A scientific calculator with trigonometric functions will be necessary in this course.</u> You may use a graphing calculator such as TI-83 or TI-84 etc. Any type of computers, phones, and calculators with "QERTY" keyboard are NOT allowed during the tests and final exam.
Attendance	<u>Attendance is required and will be taken.</u> Students are expected to attend every single class, and read the textbook and come to class prepared. In case of absence, it is your responsibility to catch up the missed class. Attendance will NOT be counted toward the course grade.
Homework	Homework assignments will be assigned on regular basis and will be graded. Late homework will NOT be collected. <u>All assignments must be submitted through CANVAS.</u> No email submission or paper!!!
Test	We will have two (2) in-class tests.
Final Exam	<u>5pm-7pm, Friday, October 22th.</u> The final is comprehensive. More details will be provided by the end of the term.
Make-Up	<u>MAKE-UP</u> test will NOT be given unless it is noticed in advance. If there is an unavoidable reason to miss it, <u>you MUST document your absence.</u>

Evaluating	Tests and Final exam are weighed as follows: <ul style="list-style-type: none"> • 2 Tests ~ 50% (each test 25%) • Homework ~ 20% • Final exam 30%
------------	--

Letter Grades will be assigned as follows

$93\% \leq "A" \leq 100\%$	$87\% \leq "B+" < 90\%$	$77\% \leq "C+" < 80\%$	$65\% \leq "D+" < 70\%$
$90\% \leq "A-" < 93\%$	$83\% \leq "B" < 87\%$	$73\% \leq "C" < 77\%$	$60\% \leq "D" < 65\%$
	$80\% \leq "B-" < 83\%$	$70\% \leq "C-" < 73\%$	$0\% \leq "F" < 60\%$

FOR HELP	- Ask questions at any time as they arise. - See me before or after class - Come to see me during the office hours - Schedule an appointment for another time.
----------	---

Tutoring

The Tutoring-Learning Center (TLC) offers **FREE** tutoring to support you in your math classes. The tutors are UWSP students who have done well in their classes and who are here to share their successful study habits and math content knowledge to help others succeed. Discussing mathematical concepts and practicing problems together clarifies and solidifies knowledge, and the tutors are eager to study with you. If you have questions about the schedules or would like to make an appointment, please visit the TLC in ALB 018 (library basement), email (tlctutor@uwsp.edu), or call (715) 346-3568.

STEM Tutoring – Fall 2021

What	Location	Schedule	Cost
STEM Drop-In Tutoring	CBB 190	No appointment needed – stop by when tutors are available: https://www.uwsp.edu/tlc/Pages/dropInTutoring.aspx .	Free
STEM One-on-One Tutoring	ALB 018	By appointment. Visit ALB 018 (library basement) to make a request or complete online request form here: https://www.uwsp.edu/tlc/Pages/request-math-science-tutoring.aspx .	Free

DISABILITIES

If special accommodations are required for exams, you need to contact the Office of Disability Services email: datctr@uwsp.edu

RIGHTS AND RESPONSIBILITIES

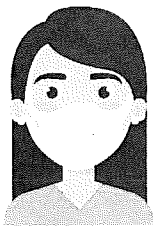
- Student Academic Standards and Disciplinary Procedures, UWS/UWSP Chapter 14:
- https://www.uwsp.edu/dos/Documents/2015_Aug_Community%20Rights%20and%20Responsibilities%20Web.pdf
- The general Rights and Responsibilities:
https://www.uwsp.edu/dos/Documents/2015_Aug_Community%20Rights%20and%20Responsibilities%20Web.pdf

GENERAL EVACUATION PROCEDURES

- <http://www.uwsp.edu/rmgt/Pages/em/procedures/initial/general-evacuation.aspx>

University policy regarding Face Coverings:

<https://www.uwsp.edu/coronavirus/>



- The wearing of face coverings is mandatory in all buildings, including classrooms, laboratories, studios, and other instructional spaces
- Failure to adhere to the requirement of wearing a face covering could result in formal withdrawal from the course.
- Student with a condition that impacts their use of a face covering should contact the Disability and Assistive Technology Center to discuss accommodations in classes.

